

# Sharing best practice to support early career dementia researchers: A World Café

Early career researcher seminar  
by INTERDEM Academy and ISTAART PEERS PIA

# INTERDEM Academy

European training network on Psychosocial Research in Dementia, for junior researchers



## Mission

INTERDEM Academy, **embedded in the INTERDEM network**, has the ambition to provide a **new generation of researchers** that possess the knowledge, attributes and skills required in order to improve dementia care research and support interventions across Europe and to successfully **pursue key tenure track positions** within INTERDEM, ensuring **sustainability** of the network into the future

- Career development and capacity building
- Training and networking events
- Adopting senior roles
- [Interdem-masterclass@maastrichtuniversity.nl](mailto:Interdem-masterclass@maastrichtuniversity.nl)
- [www.interdem.org](http://www.interdem.org)



# Activities and events so far

- **Multi-day Masterclasses** – last 6 yrs in collaboration with INDUCT and DISTINCT schools
- **INTERDEM seminar at Alzheimer Europe Conference** – INTERDEM Academy session this year in collaboration with ISTAART PEERs PIA
- **INTERDEM Academy Café** - Online networking event, about 3 times a year
- **INTERDEM Academy Travel fellowship** – 3-6 months research exchange with INTERDEM centre – 2022-2023 call open (Deadline Nov 11<sup>th</sup>) – €3500 max for travel and stay
- **Annual INTERDEM Academy Publication award** – acknowledge and share results, winner gets opportunity to present article at INTERDEM meeting and monetary price (will be partly changed to funding to attend conference)



# ISTAART

Alzheimer's Association International Society to Advance Alzheimer's Research and Treatment

Global Alzheimer's and dementia science community (AAIC Conference)

Professional Interest Areas (PIA) to Elevate Early Career Researchers (PEERs)

592 members from all over the world, 6 continental leads

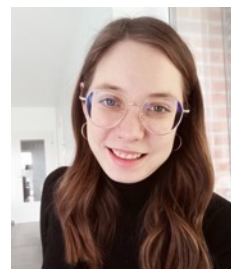
## Mission

- Attract more people to **dementia research** and support them to remain in the field while challenging funders and institutions to deliver improvements
- Establish and maintain a **supportive network** to share ideas and collaborations, discuss, & troubleshoot career challenges
- Develop (online) content to **support** the personal & career development of ECRs

Highlights of '22: Global survey, webinars, pop-up academy at AAIC

European PEERs Working Group:

Want to join? [Sara.bartels@maastrichtuniversity.nl](mailto:Sara.bartels@maastrichtuniversity.nl)



# Sharing best practice to support early career dementia researchers: A World Café

Interactive session from ECRs for ECRs

# Identifying ECR challenges

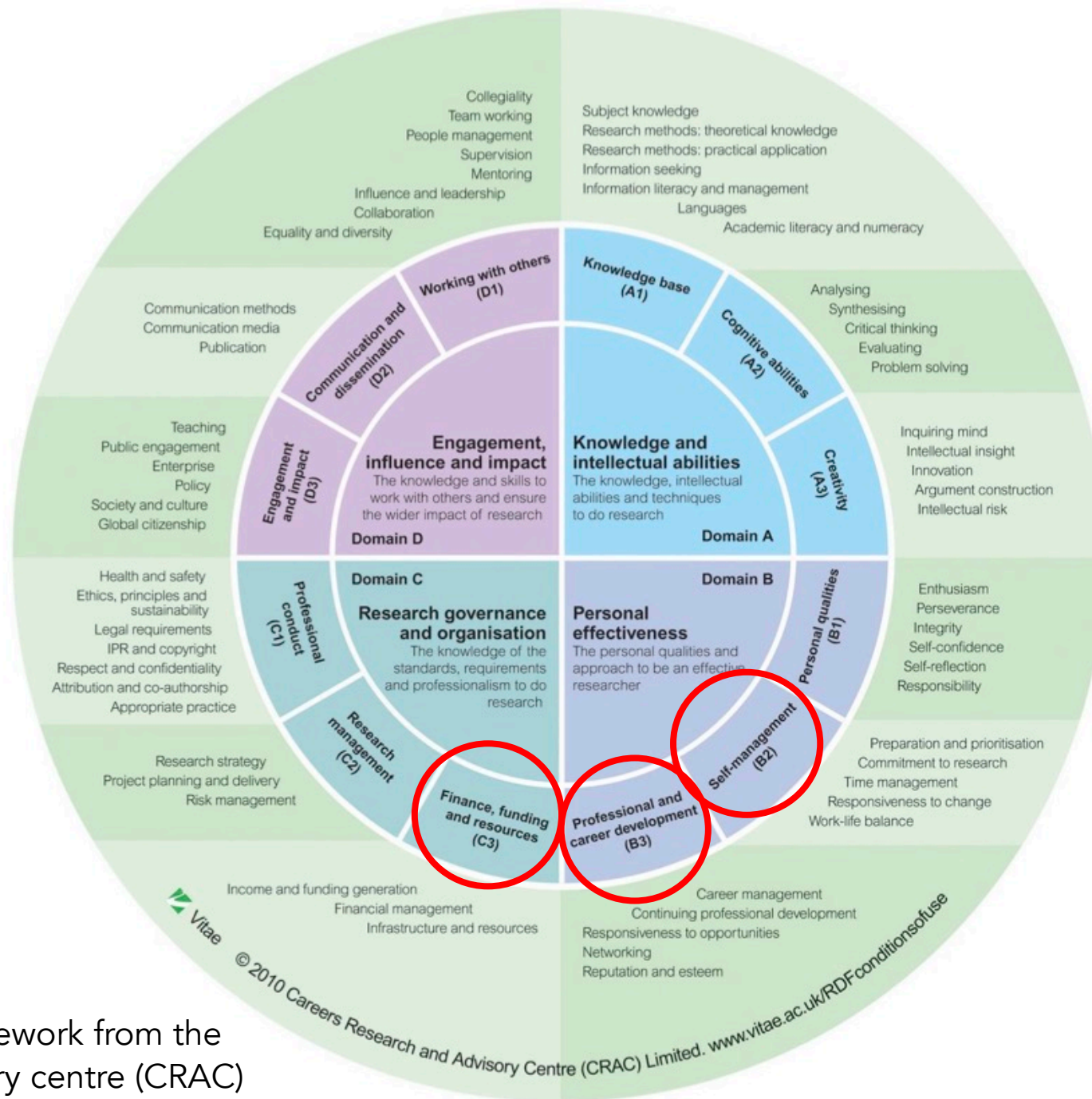
ECR survey (Building on Global survey from 2021)



n=69 responses across Europe  
Ethical approval

Areas where more support is needed:

- Self-management & work-life balance
- Career progression & management
- Financial support & grant writing



Research development framework from the Careers research and advisory centre (CRAC)



# A World Café

Aim: Identify your “best practice” and build future support

- 6 round tables with ~8 participants, a moderator & note taker
- 2x 20 min discussion:  
Solution-oriented conversations
- 10 min wrap-up
- Notes/ recorded input will be use to improve INTERDEM academia/ ISTAART PEERs PIA actions





# Ground rules

We are a hospitable environment.

Every question you have matters.

We encourage everyone's contribution.

We encourage diverse perspectives.

We listen to each other and are free to ask for extra insights and deeper questions.

We, from the organizing team, will harvest and share your collective ideas in a confidential way!

Next INTERDEM Academy Café in collaboration with ISTAART PEERs

## Exploring best practices to support early career dementia researchers: A World Café - Part 2

- Open to all early and mid career researchers.
- Building on the insights gathered today and addressing some new challenges.
- Monday 5 December - 3-5 pm (CET) in Zoom.
- Sign up now: [https://maastrichtuniversity.eu.qualtrics.com/jfe/form/SV\\_42zifCgaYK4MXdA](https://maastrichtuniversity.eu.qualtrics.com/jfe/form/SV_42zifCgaYK4MXdA)
- For more information: [interdem-masterclass@maastrichtuniversity.nl](mailto:interdem-masterclass@maastrichtuniversity.nl)



# Thank you for your participation!

Fania Dassen<sup>1,2</sup>, Sara Laureen Bartels<sup>2,3</sup>, Joni Glissen<sup>4,5</sup>, Charlès Dupont<sup>4</sup>, Pascale Heins<sup>2</sup>, Rita Maldonado Blanco<sup>6,7</sup>, Adam Smith<sup>8</sup>, Frans Verhey<sup>2</sup>

Pre-conference support: Sarah Wallcook<sup>9,10</sup>, Eithne Heffernan<sup>11</sup>

<sup>1</sup> Alzheimer Netherlands, Amersfoort, the Netherlands, <sup>2</sup> Dept of Psychiatry and Neuropsychology and Alzheimer Centrum Limburg, Maastricht University, Maastricht, the Netherlands, <sup>3</sup> Dept of Clinical Neuroscience, Division of Psychology, Karolinska Institutet, Stockholm, Sweden, <sup>4</sup> End-of-Life Care Research Group, Dept of Family Medicine & Chronic Care, Vrije Universiteit Brussel, Brussel, Belgium and Universiteit Gent, Gent, Belgium, <sup>5</sup> Center for Aging and Serious Illness, Massachusetts General Hospital, Harvard Medical School, Boston, USA, <sup>6</sup> Research Institute for Design, Media and Culture (ID+), Portugal, <sup>7</sup> Dept of Communication and Art, University of Aveiro, Aveiro, Portugal, <sup>8</sup> University College London, London, UK, <sup>9</sup> Stockholm Gerontology Research Centre, Sweden, <sup>10</sup> Karolinska Institutet, Stockholm, Sweden, <sup>11</sup> University of Nottingham, Nottingham, UK

